

Parasols





8202 mediterrane
with attached valance and integrated lighting.

Available with a span width of up to six metres, this is big in format. It provides cover for everyone even there are a lot of guests. On terraces of restaurants, cafés and ice cream parlours it signals from a distance that people are sitting comfortably and secure.

A shining example of the innovation at Caravita® is the new lighting feature. Integrated almost invisibly in the shade struts, it does not disturb function and visual appearance in any way and provides pleasant, bright light. The electricity is supplied by a power

socket at the bottom of the mast or from the ground via the floor anchor directly into the mast. The lighting is optional, so must be ordered separately.

When it gets cooler later on, the attachable infrared radiators generate pleasant warmth.



luminescent 3914 dark red.



Opening and closing: it is quick and easy to get the knack of turning it.



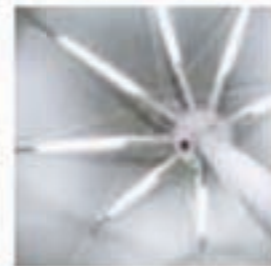
Raingutters between two shades increase the protected area.



Brings warmth to cool night-time hours: radiant heater on the shade.



Free of folds: the shade struts can be extended so that the cloth remains ideally stretched at all times.



Daylight at the push of a button: the lighting is integrated attractively in the shade struts. No assembly and disassembly when opening and closing the shade.





Available sizes (in cm)

Frame	Shade size	Shade height open	Shade height closed	Headroom	Closing height
□	300 x 300	300	372	225	144
□	350 x 350	310	384	225	129
□	400 x 400	320	412	225	109
□	450 x 450	333	434	225	95
□	500 x 500	342	468	225	93
□	300 x 400	310	394	225	125
□	350 x 450	321	412	225	106
□	400 x 500	333	434	225	94
○	350 ø	290	366	225	176
○	400 ø	290	377	225	162
○	450 ø	304	385	225	143
○	500 ø	311	395	225	127
○	550 ø	318	407	225	113
○	600 ø	326	419	225	99

available with and without valance